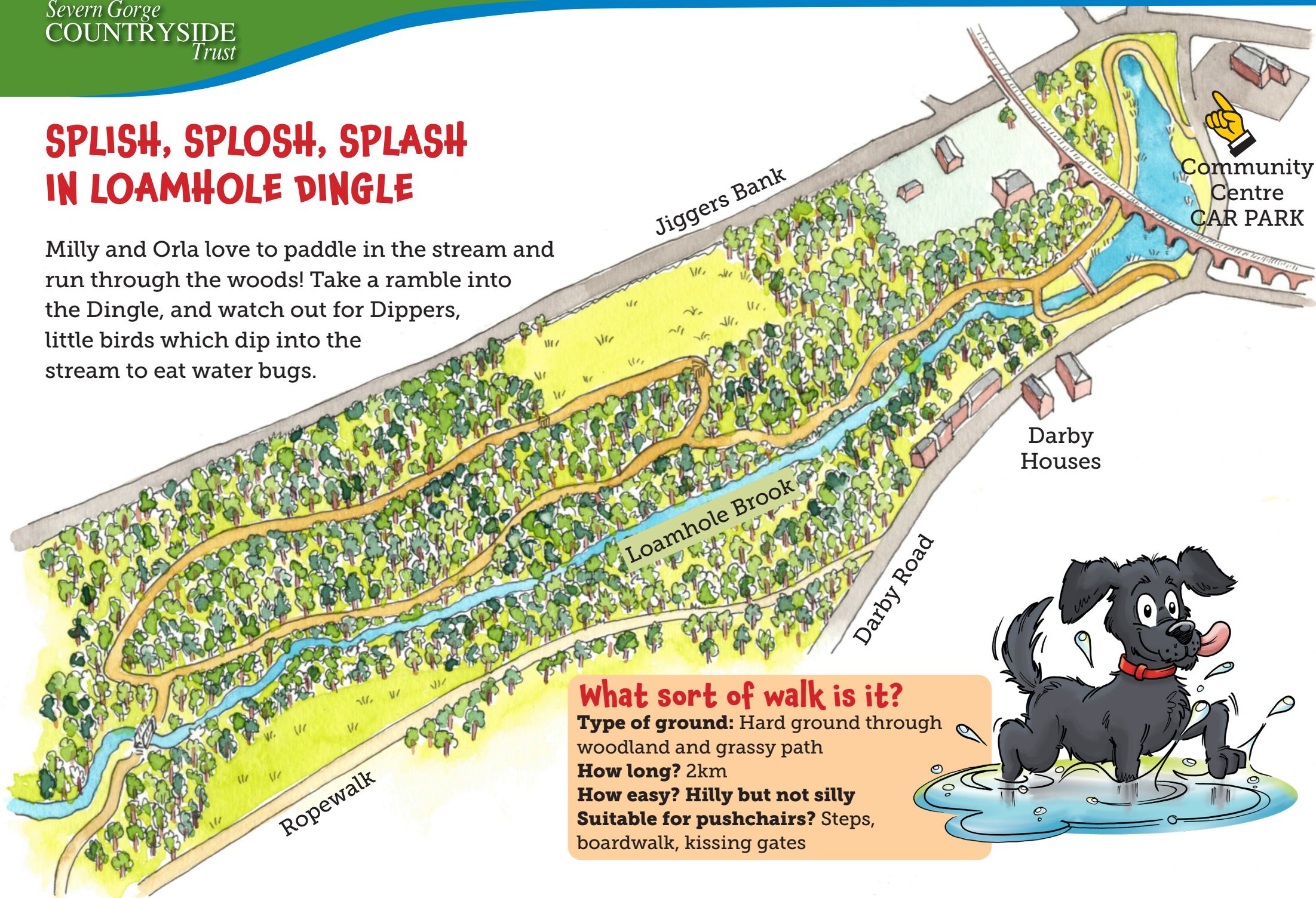


## SPLISH, SPLOSH, SPLASH IN LOAMHOLE DINGLE

Milly and Orla love to paddle in the stream and run through the woods! Take a ramble into the Dingle, and watch out for Dippers, little birds which dip into the stream to eat water bugs.



### What sort of walk is it?

**Type of ground:** Hard ground through woodland and grassy path

**How long?** 2km

**How easy?** Hilly but not silly

**Suitable for pushchairs?** Steps, boardwalk, kissing gates





Hi, I'm **Orla**...

... and I'm **Milly**!



We are lucky enough to be able to explore and play in the woodlands and meadows that belong to Severn Gorge Countryside Trust.

We'd love you to come and explore these walks with your family, where you can look out for a friendly dragon and ancient oak trees and have a go at some of the fun activities on this page.

Don't forget to share pictures of your family adventures on our Facebook page **#millyandorlawalks**

 **Happy Exploring!**

**TESCO** Bags of Help

# Activities

**Milly loves bounding through the long grass**

Lie down in the meadow, look up at the skies and clouds. What shapes can you find? What can you find in the grass? Butterflies, insects... a great natural world!

**Orla loves to paddle in the stream**

Enjoy a paddle or play Pooh sticks on the bridge.

**Orla loves a white flower and Milly a lump of coal!**

Can you find something to match the colour of your clothes?

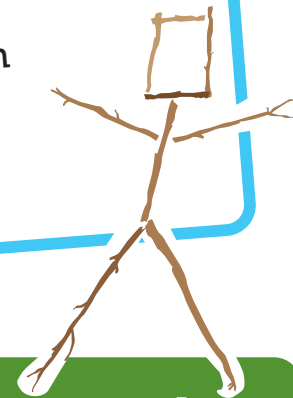


Severn Gorge  
**COUNTRYSIDE**  
Trust



**Milly and Orla love to chase and catch sticks!**

Use sticks to build a den in the woods for Milly, Orla, a fairy or a friend or make a stick man!



**Four places to explore around The Gorge**

