

## Severn Gorge Countryside Trust

was established in 1991 to manage more than 265 hectares of woodland, grassland, pools, heathland, historical structures and other public spaces throughout the Ironbridge Gorge.

The Trust manages this landscape for the benefit of local communities and visitors who visit the Gorge.

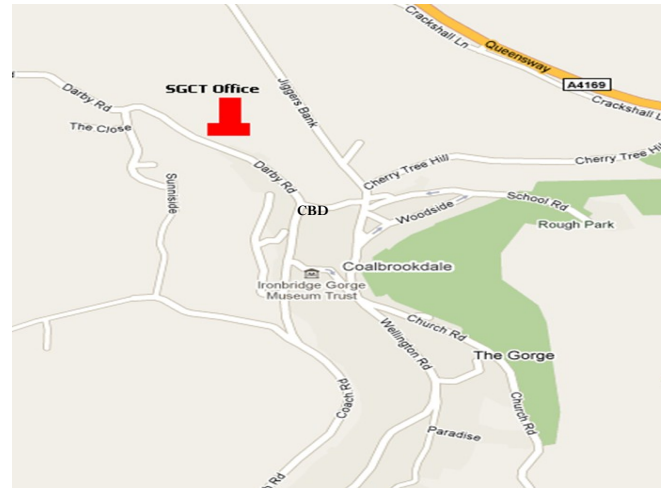


## Get Involved in Conservation Volunteering

Established in 2006, the Trust's volunteering programme involves local people in the management of the landscape within the Ironbridge Gorge. The project provides opportunities for you to volunteer throughout the year in a range of activities such as path maintenance, hedge-laying, ecological surveying and step building. All the activities are free, so join us for a different day out, have fun, learn new skills, make new friends and contribute to the management of this very special area.

### What you need to know:

- All activities are subject to change at short notice due to inclement weather or other circumstances. Please book for all events by 9.00 am on the day.
- Please bring sturdy footwear, outdoor clothing including waterproofs, drink and packed lunch.
- We will provide tools, training, and supervision. We also have gloves and goggles available
- Under-16s must be accompanied by a guardian. Under-18s will be asked to provide parental permission before taking part.
- Please make sure that your Tetanus injections are up-to-date.
- No dogs please.



## Severn Gorge Countryside Trust

Darby Road  
Coalbrookdale  
Telford  
TF8 7EP  
01952 433880

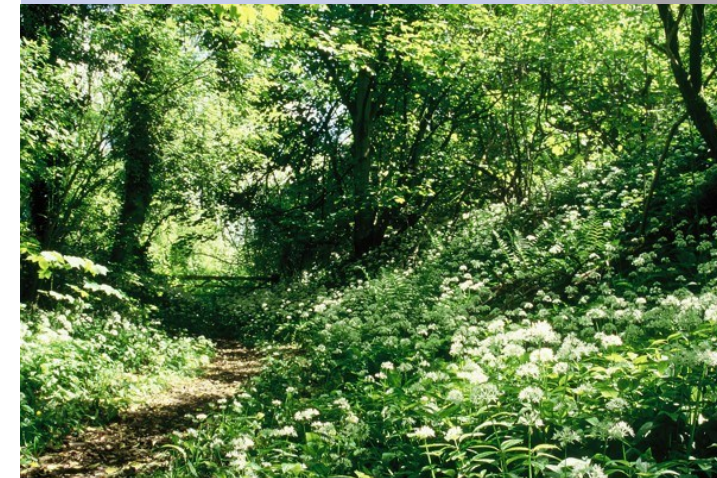
Contact: [cadiprice@severngorge.org.uk](mailto:cadiprice@severngorge.org.uk)  
[www.severngorge.org.uk](http://www.severngorge.org.uk)

REG CHARITY NO. 1004508



# Get involved in the Ironbridge Gorge PATH MAINTENANCE

Volunteering programme  
January - June 2012



## Tuesday 31st January 2012

10:00am - 1:00pm

### Preenshead, near Maws Craft Centre

Meet: 9.45: CBD community centre

To explore a new path through the woodland in order to plan a circular route

Physical level:

**Steep in places**

## Tuesday 28th February

10:00am - 1:00pm

### Haywood

Meet: 9.45: CBD community centre

A popular woodland walk above Haywood pastures, near Coalport and Hay Incline Plane

Physical level:

**Moderate with steps**

## Tuesday 27th March

10:00am - 1:00pm

### Vanes & Wynne's Coppice to Loamhole Dingle and Rope-walk

Meet: 9.45: CBD community centre

Checking definitive Rights of Ways between Coalbrookdale and Lightmoor

Physical level:

**Steep with steps**

## Tuesday 24th April

10:00am - 1:00pm

### Sutton Woods (west)

Meet: 9.45: CBD community centre

A woodland near Coalport and the Silkin Way

Physical level:

**Moderate with steps**

## Tuesday 29th May

10:00am - 1:00pm

### Sutton Woods (east)

Meet: 9.45: CBD community centre

A large area with new paths, steps and bridges installed in 2008

Physical level:

**Steep with steps**

## Tuesday 26th June

10:00am - 1.00pm

### Workhouse Coppice and Benthall Edge

Meet: 9.45: CBD community centre

New paths installed in 2007-8 and part of the new circular red route

Physical level:

**Moderate with some steps**

## Path Maintenance:

The paths within the Severn Gorge are very well used and need constant maintenance for the public to access safely.

As a new venture for 2012, the Trust are asking volunteers to help maintain the myriad of woodland paths while exploring different areas of the Gorge at a leisurely stroll.

Each walk will last about 3 hours. We will check routes and way-markers and clear scrub lying across paths.

Pruning tools, gloves and eye goggles are available for the tasks.

This venture is in addition to the regular Thursday volunteering day.

If you are interested in taking part, please contact Cadi Price

Telford Access to Nature Partnership Officer

(see overleaf for contact details)

Transport, by minibus to the sites, is available from Coalbrookdale Community Centre (car park) on Darby Road, TF8 7DX

Max no. 10 people per walk.

Advanced booking essential

